

apaiser



“

apaiser was conceived to realise my vision of providing us all with a sanctuary in our home, where we could revitalise and refresh! To deliver my dream, I created our unique reclaimed apaiser MARBLE® to dress the bathroom in the uncomplicated joys of nature.

20 years later, I am proud that our unique offering is featured in the most beautiful private homes, hotels and resorts globally, and specified by the most amazing and talented designers and clients all over the world.

BELINDA TRY
Founder & President

”



*Luxury, craftsmanship and
innovation lie at the core of every
apaiser piece*

Our mission is to design and bring to life with inherent value
a bathware range that inspires ritual bathing and
overrides the temptation to compromise



OMAN BATH & BASIN
'GRAPHITE'

Maison APAISER

At apaiser, our mission is to craft beautiful bathware, so clients and designers may create luxurious, and unforgettable bathrooms. We have always believed that a tranquil private retreat elevates both our client's daily routine, and a guest's hotel experience. A super yacht, or cruise aboard a luxury ship, are merely a sea borne extension of our private holiday homes and opulent holidays. So why not craft bathware for perhaps the most resplendent and indulgent of bathroom spaces?

With this in mind, we created a lightweight building method which allowed us to reduce the weight of our handcrafted, sustainable, apaiserMARBLE® bathware. apaiserMARBLE® is our own, luxurious blend of repurposed marble and stone, sourced from the rich soils of the Australian Barossa Region. It is a composition of up to 90% reclaimed marble, combined with high quality resins merging the luxuriousness of marble with performance. Lighter than natural stone, it retains the sensual touch and feel of marble, whilst delivering superior strength, performance and stain resistance. Shaped by hand with absolute perfection by our master craftsmen, apaiser bathware exemplifies the best of nature, technology, and meticulous artisan craftsmanship.

ZEN OVAL
BATH MOND WHITE'
*Residence in Melbourne,
Australia*



Our APPROACH

Our commitment to environmentally sensitive production has been a core part of our brand DNA since our inception nearly 20 years ago. We manufacture our products in world class apaiser-owned ateliers in Southeast Asia, which meet the most fastidious standards and quality checks.

Our Bath Couture and Made-to-Measure services, give designers the ability to tailor-make bathware, perfectly suited to their client's needs and the more challenging, space-conscious bathrooms. Our experienced in-house designers have worked closely with designers and yacht builders alike in developing innovative solutions which integrate the aesthetics and quality of our luxury bathware and the specialised requirements of naval architecture.

HAVEN BATH

'DIAMOND WHITE'

Residence in New South Wales, Australia



At a GLANCE...

DESIGN WITH CONFIDENCE

Work with our experienced in-house design team to create bespoke pieces exclusively for your project. Bath Couture (custom design) and Made-to-Measure creations are our specialty.

MIND THE ENVIRONMENT

Each apaiser piece is handcrafted from our sustainable material, apaiserMARBLE® - a blend of repurposed marble and resins. Sustainably sourced raw ingredients, and environmentally sensitive production, have been our focus since the inception of apaiser. We continue to strive to further reduce our impact on the environment.

QUALITY AND PERFORMANCE

Our signature material is beautiful in appearance and touch, with excellent heat retention. It is durable and easy to maintain, clean, and repair. apaiserMARBLE is non-porous, stain, mould and bacteria resistant and lighter than natural stone. We craft bathware of the highest quality which is durable and long lasting. Our pieces are UPC certified (CSA B45.5-17/IAPMO Z124-2017) under IAPMO standards, and LEED compliant.

LIGHTWEIGHT AND SAFE

Our production technology significantly reduces weight and enhances the strength of our pieces in comparison to natural stone. Both the material and hand finishing process combine to create pieces which are naturally slip resistant. Additional safety features, such as integrated hand grabs can be incorporated for further peace of mind.

TRUSTED AND GLOBAL

We are a proud Australian brand, who has designed and crafted bathware for beautiful hotels, resorts and private residences all over the world for more than 20 years. Our team is stationed across the globe, working closely with designers everywhere. We can supply to any country, both directly or with the help of one of our local partners.



TULLE BATH AND BASINS
'DIAMOND WHITE'

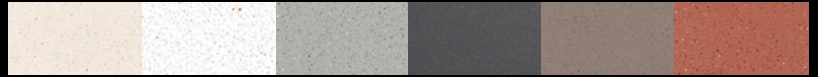
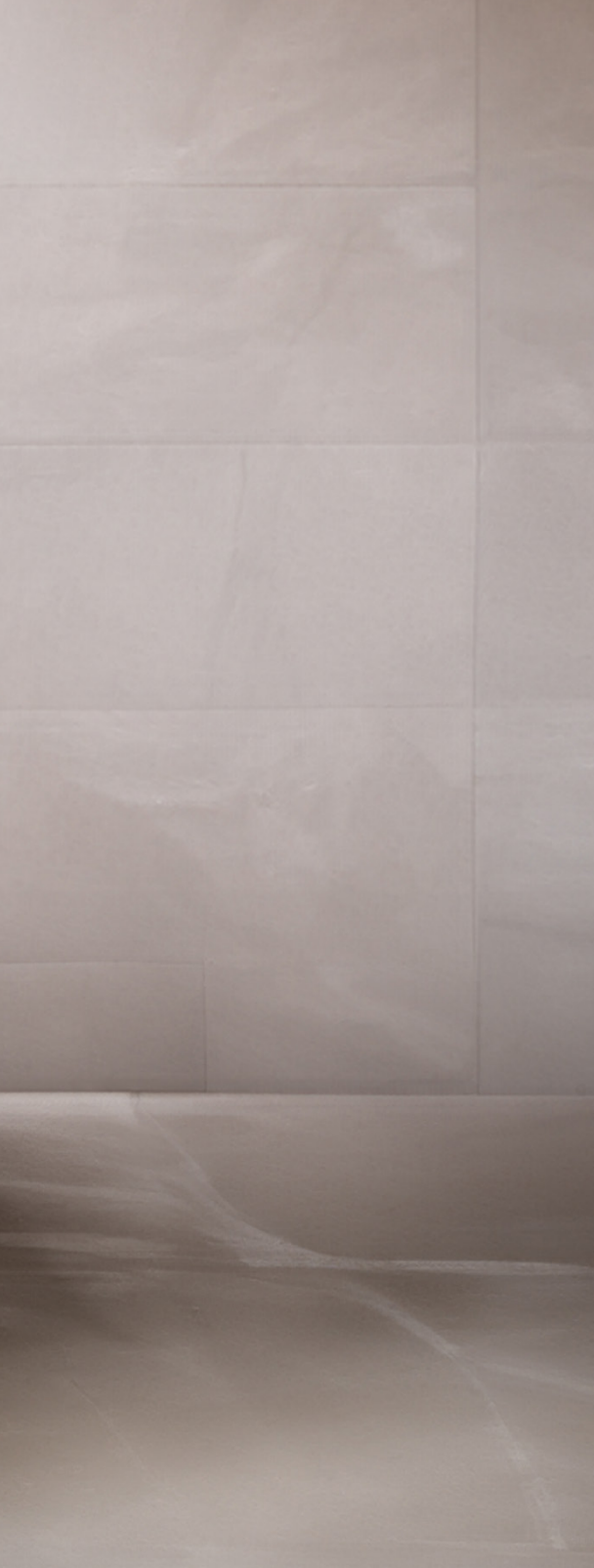


Oman Freestanding Bath
Finish: Nimbus

“

In the turmoil of our busy lives I craved a space to reflect and revitalise at home. Apaiser was created to achieve this goal. Through the development of sustainable luxury bathware, I set out to dress the bathroom in the uncomplicated joys of nature. At Apaiser, The Home of Bath Couture, expression knows no boundaries.

apaiser



COLOUR PALETTE

Experience the difference with ApaiserMARBLE®, enriched with pure Australian minerals.

All Apaiser products are handcrafted from ApaiserMARBLE® – a luxurious blend of repurposed marble, combined with stone and minerals sourced from the rich soils of the Australian Barossa region.

Ode Freestanding Basin
Finish: Graphite



robertson

design.ideas™

Visit robertsondesignideas.co.nz
for the extended range.

VESSEL BASINS

ODE VESSEL BASIN

Ø430 X 140(H)
NTH / NO OVERFLOW
APAISERMARBLE®
INCLUDES WASTE

AP-6663_ _



ALLEGRA VESSEL BASIN

Ø400 X 120(H)
NTH / NO OVERFLOW
APAISERMARBLE®
INCLUDES WASTE

AP-6719X2_ _



TULLE VESSEL BASIN

Ø450 X 180(H)
NTH / NO OVERFLOW
APAISERMARBLE®
INCLUDES WASTE

AP-6673X2_ _



SUBLIME VESSEL BASIN

600(L) X 300(W) X 150(H)
NTH / NO OVERFLOW
APAISERMARBLE®
INCLUDES WASTE

AP-6068X2_ _



MATCHING WASTE

Apaiser Baths and Basins include matching coloured/patterned wastes allowing you to add that final touch.

FINISHES

Select finish code below e.g. Allegra Vessel Basin with Red Earth finish: AP-6719X2.**RE**

DW Diamond White	GL Glacier	SN Starry Night	SD Snowdrift	CT Cotton	LI Linen
NE Nero	GP Graphite	CH Charcoal	LG Luxe Grey	NB Nimbus	TA Taupe
GG Ghost Gum	DH Daintree Haze	RE Red Earth	BG Brolga Grey	SB Saltbush	MG Mangrove

Note: Natural variations are characteristic of the material and variations may occur from time to time.



Ode Vessel Basin
Ode Freestanding Bath
Finish: Linen
Pan Extended Height Basin Mixer
Pan Floor Bath Spout
Finish: Brushed Nickel

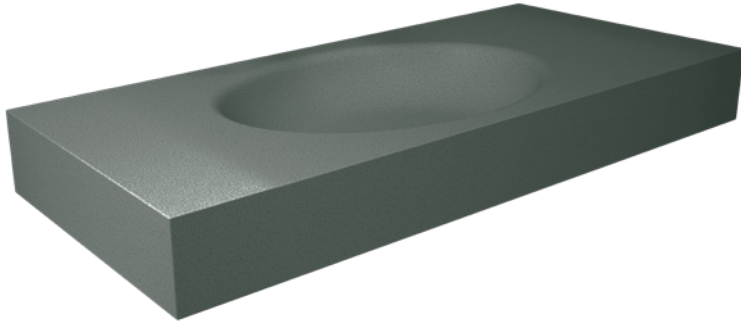
*All guarantees are subject to terms
and conditions and available at:
robertson.co.nz/warranties

WALL BASINS

HAVEN WALL BASIN

1200(L) X 500(W) X 130(H)
 NTH / NO OVERFLOW
 APAISERMARBLE®
 INCLUDES WASTE

AP-HAVEN12S_ _



ALSO REQUIRES APAISER
 WALL BASIN BRACKET (PAIR)
 CODE: **AP-BRACKETS**



REVOLUTIONARY MATERIAL

Born of the elements, distilled by nature, strengthened by man and inspired by design, ApaiserMARBLE® is a luxurious high performing marble, enriched with the purity of Australian minerals. This revolutionary material delivers a naturally organic and sensual quality to the bathroom experience and can be crafted into the most inspiring bathware by the world's leading designers.



FINISHES

Select finish code below e.g. Haven Wall Basin with Saltbush finish: AP-HAVEN12S.**SB**

					
DW Diamond White	GL Glacier	SN Starry Night	SD Snowdrift	CT Cotton	LI Linen
					
NE Nero	GP Graphite	CH Charcoal	LG Luxe Grey	NB Nimbus	TA Taupe
					
GG Ghost Gum	DH Daintree Haze	RE Red Earth	BG Brolga Grey	SB Saltbush	MG Mangrove

Note: Natural variations are characteristic of the material and variations may occur from time to time.

apaiser

5 Year Guarantee*
 ApaiserMARBLE®

Hand Crafted
 Lighter than Natural Stone

Exceptional Thermal Properties
 Natural Slip Resistance

Safe and Natural
 Outdoor Use - 1 Year Guarantee*



Haven Wall Basin
Finish: Charcoal

Uno Basin Mixer
Finish: Brushed Brass

*All guarantees are subject to terms
and conditions and available at:
robertson.co.nz/warranties



Zen Freestanding Bath
Finish: Diamond White



apaiser

SCULPTED BY HANDS

Every piece of Apaiser bathware is created by a team of highly experienced master craftsmen, who have perfected their trade over many years. Hand finished in specialised ISO 9001 and ISO 14001 atelier, each Apaiser piece is crafted by their artisans who meet the most fastidious standards. Apaiser is deeply committed to quality and design at every stage, resulting in beautiful works of sculptured art that are highly functioning in the bathroom. More than 12 master craftsmen will spend over 300 hours carefully creating each piece of Apaiser bathware by hand, adhering to the highest atelier production standards. Handcrafted to perfection, it's little wonder Apaiser is the preferred choice of the world's most renowned hotels, architects and designers.



Haven Freestanding Bath
Finish: SnowDrift

Tulle Freestanding Bath
Finish: Diamond White



Reflection Freestanding Bath
Finish: Nero

robertson

design.ideas™

Visit robertsondesignideas.co.nz
for the extended range.

APAISER MARBLE BATHS

ODE FREESTANDING BATH

1600(L) X 850(W) X 600(H)
 APAISERMARBLE®
 INCLUDES WASTE

AP-50508.___



TULLE FREESTANDING BATH

1650(L) X 850(W) X 600(H)
 APAISERMARBLE®
 INCLUDES WASTE

AP-50596.___



SUBLIME FREESTANDING BATH

APAISERMARBLE®
 INCLUDES WASTE

1500(L) X 750(W) X 550(H)
 AP-5592X3.___

1700(L) X 850(W) X 480(H)
 AP-5367X3.___



MATCHING WASTE

Apaiser Baths and Basins include matching coloured/patterned wastes allowing you to add that final touch.

FINISHES

Select finish code below e.g. Ode Freestanding Bath with Linen finish: AP-50508.LI

					
DW Diamond White	GL Glacier	SN Starry Night	SD Snowdrift	CT Cotton	LI Linen
					
NE Nero	GP Graphite	CH Charcoal	LG Luxe Grey	NB Nimbus	TA Taupe
					
GG Ghost Gum	DH Daintree Haze	RE Red Earth	BG Brolga Grey	SB Saltbush	MG Mangrove

Note: Natural variations are characteristic of the material and variations may occur from time to time.

apaiser

5 Year Guarantee*
 ApaiserMARBLE®

Hand Crafted
 Lighter than Natural Stone

Exceptional Thermal Properties
 Natural Slip Resistance

Safe and Natural
 Outdoor Use - 1 Year Guarantee*



Tulle Freestanding Bath
Tulle Vessel Basin
Finish: Saltbush

Pan Wall Mounted Basin Mixer
Pan Bath Column
Pan Towel Rails
Finish: Brushed Nickel

Capri 1600 Wall Vanity
Finish: Desert
Quantum Quartz Vanity Top
Finish: Leggero

*All guarantees are subject to terms
and conditions and available at:
robertson.co.nz/warranties

25 Vestey Drive
Mt Wellington, Auckland 1060

PO Box 14695, Panmure
Auckland 1741, New Zealand

Ph: +64 9 573 0490
Fax: +64 9 573 0495
Email: sales@robertson.co.nz

ROBERTSON.CO.NZ



You can view and purchase our products nationwide from our supporting bathroom suppliers. To find your nearest location visit **ROBERTSON.CO.NZ** and click on the 'where to buy' link at the top of the page. Alternatively you can view products at our Robertson Bathware Showrooms at the locations below.

SHOWROOMS

A

AUCKLAND

ROBERTSON

25 Vestey Drive, Mt Wellington
Ph: (09) 573 0490

Open Monday to Friday 8.00am - 4.30pm
Open Saturday 9.00am - 2.00pm
Closed Sunday and public holidays

KITCHEN THINGS | LUXURY COLLECTION

26 Morrow Street, Newmarket
Ph: (09) 522 8375

Open 7 days 10am - 6pm

W

WELLINGTON

ROBERTSON

23 Marion St, Te Aro
Ph: (04) 595 1165

Open Monday to Friday 8.30am - 5pm
Closed Saturday and Sunday

C

CHRISTCHURCH

HOME IDEAS

37 Mandeville Street Riccarton
Ph: (03) 348 2863

Open Monday to Friday 9am - 4pm
Saturday 10am - 2pm Sunday 10am - 2pm

robertson
design.ideas™

ROBERTSON DESIGN IDEAS

Email: designideas@robertson.co.nz

ROBERTSONDESIGNIDEAS.CO.NZ



robertson®
trade

ROBERTSON TRADE PARTS & SERVICE CENTRE

42 Vestey Drive
Mt Wellington, Auckland 1060
Email: trade@robertson.co.nz

ROBERTSONTRADE.CO.NZ



ROBERTSON OUTLET STORE

42 Vestey Drive
Mt Wellington, Auckland 1060
Email: outlet@robertson.co.nz
By appointment only

www.trademe.co.nz/stores/robertson-bathware-outlet-store